

Schnellbefestiger:  
Federbandstahl, gehärtet und angelassen  
auf 1450 bis 1600 N/mm<sup>2</sup>.

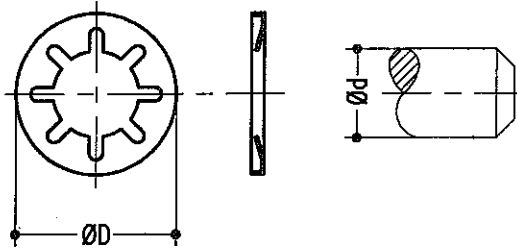
Oberfläche: phosphatiert geölt

quick fixing:  
spring steel, hardened and tempered  
to 1450 - 1600 N/mm<sup>2</sup>

Surface: phosphated oiled

article no.	∅D mm	∅d mm	m mm	n mm	b mm
PD 17-25	10	8	1.05	4.5	18
PD 17-26	6	5	0.74	3	11
PD 17-27	8	6	0.94	3.5	14
PD 17-28					

article no.	∅D mm	∅d mm	m mm	n mm	b mm
PD 17-29					
PD 17-30					
PD 17-31					
PD 17-32					




Schnellbefestiger  
Federstahl roh

quick fixing  
spring steel blank

article no.	∅D mm	∅d mm		
PD 17-33	15	8		
PD 17-34				
PD 17-35				
PD 17-36				

article no.	∅D mm	∅d mm		
PD 17-37				
PD 17-38				
PD 17-39				
PD 17-40				

article			article no.		
Schnellbefestiger / quick fixing			PD 17-25		
			↕		
			PD 17-40		
 Tel.+49 521 9417-0 info@lusch.de	date/name	name	name		
	03.11.16/Bd	Tw	6.12.16		