

Schnellbefestiger  
mit Kappe

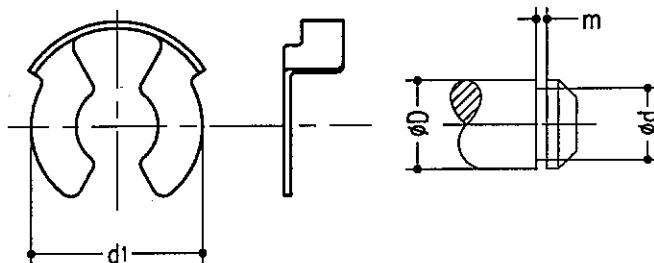
Oberfläche: blank

quick fixing  
with cap

surface: polished

article no.	øD mm	ød mm	m mm	b mm
PD 17-00	8	6	1.5	5
PD 17-01				
PD 17-02				
PD 17-03				

article no.	øD mm	ød mm	m mm	b mm
PD 17-04				
PD 17-05				
PD 17-06				
PD 17-07				



Schnellbefestiger  
Federstahl verzinkt

quick fixing  
spring steel galvanized

article no.	øD mm	ød mm	m mm	d1 mm
PD 17-08	8	6	0.94	11.5
PD 17-09	10	8	1.05	15.6
PD 17-10				
PD 17-11				

article no.	øD mm	ød mm	m mm	d1 mm
PD 17-12				
PD 17-13				
PD 17-14				
PD 17-15				

article

Schnellbefestiger / quick fixing

article no.

PD 17-00

⇒

PD 17-15

**LUSCH**

Tel.: +49 521 9417-0  
Fax.: +49 521 9417-228

date/name

31.10.00/Ru

name

Ho

name

31.10.  
00